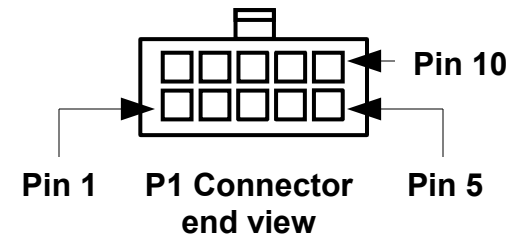
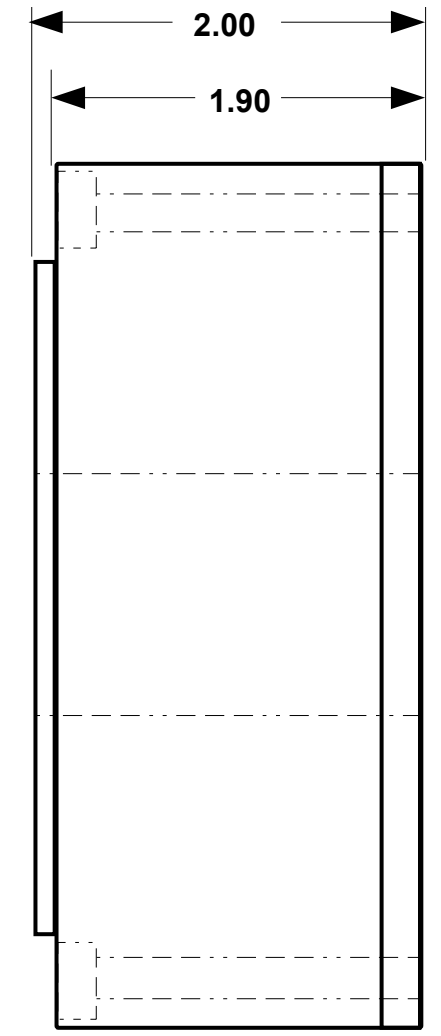
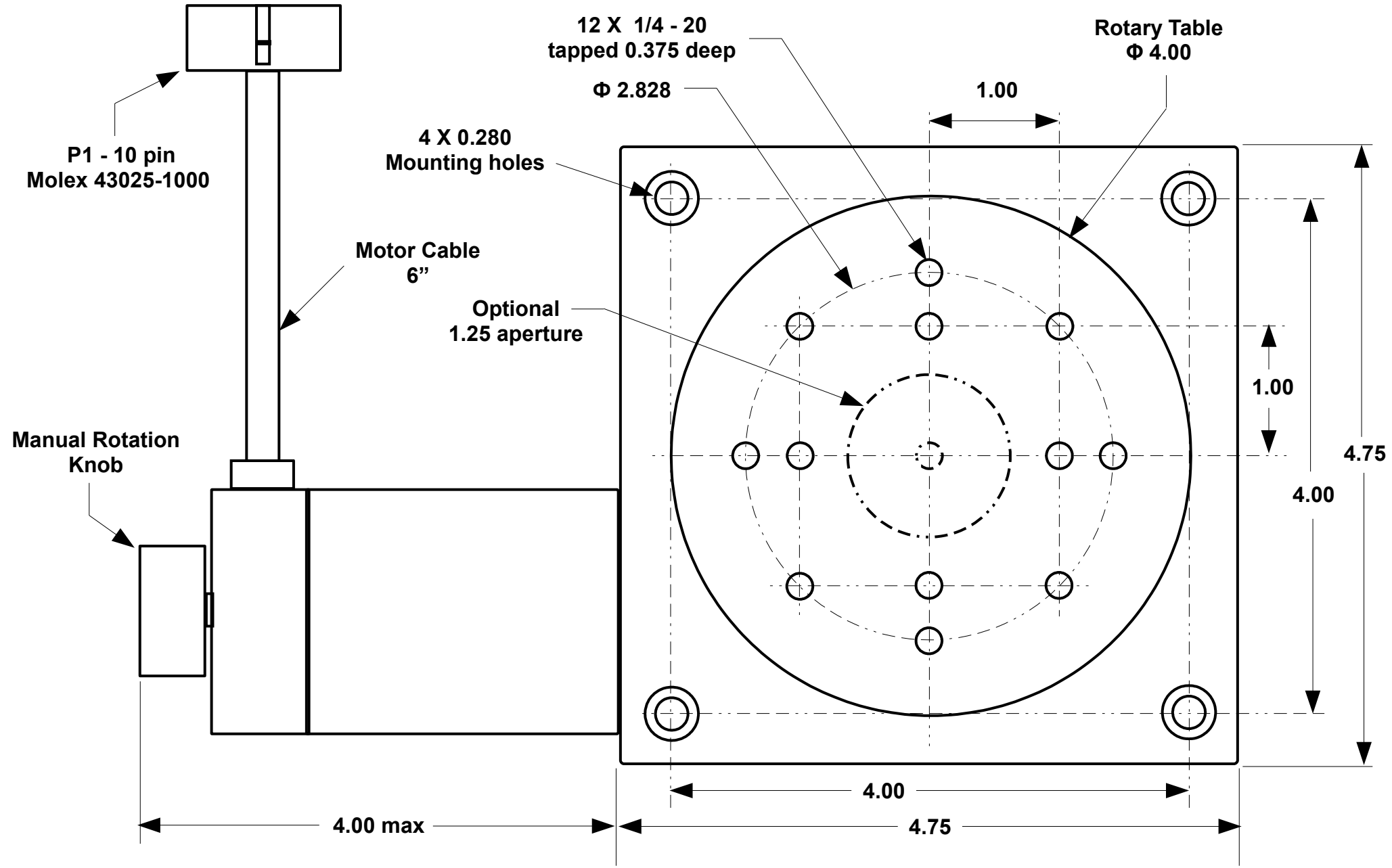


Notes

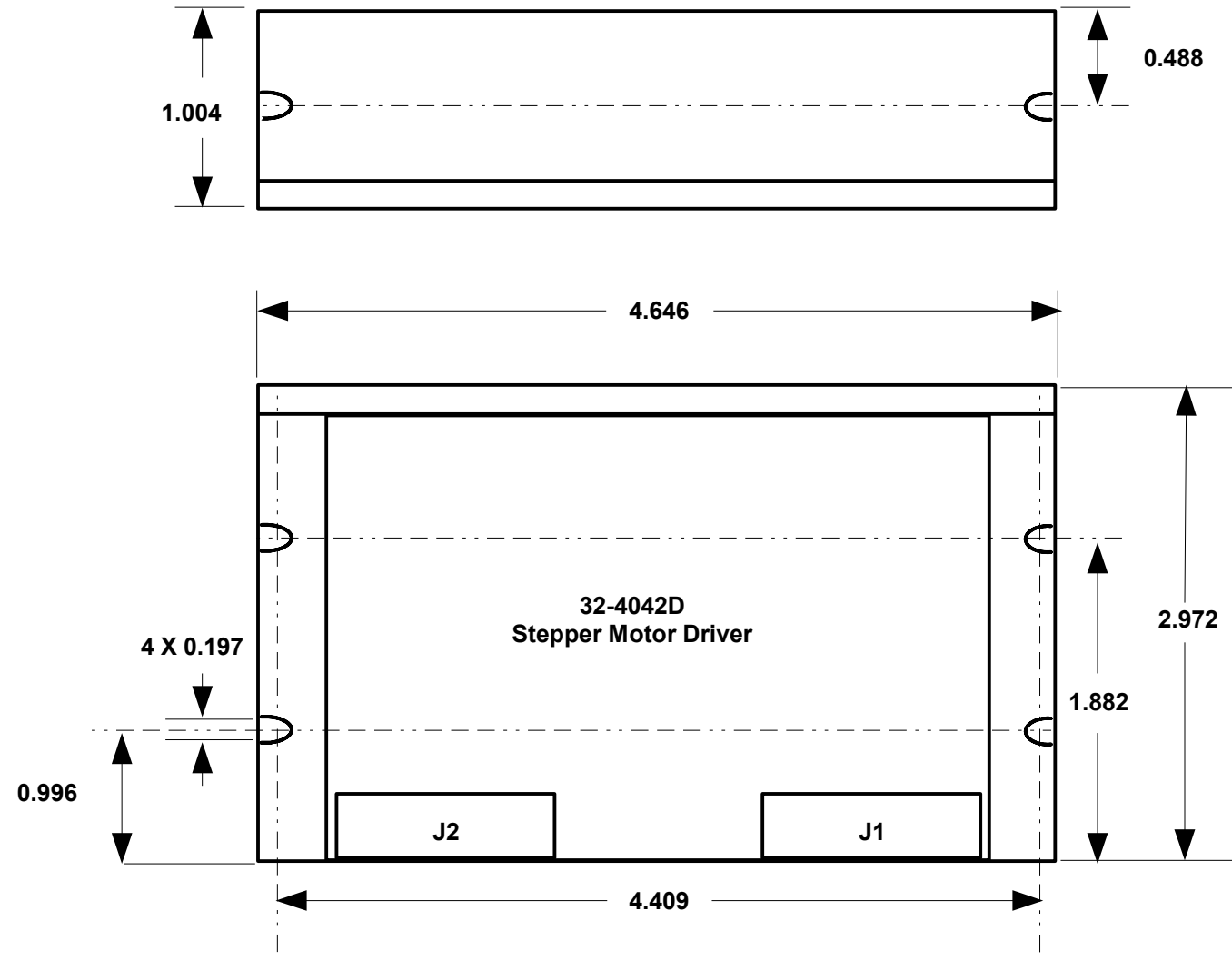
LTR	Description	ECN No.	Date	Initial
A	Initial Release		5-31-2012	E.E.



Material	Proprietary Information Do not share with a third party without written approval from SignalTronix	Tolerances unless otherwise specified: X.XXX = ±0.005" X.XX = ±0.01" Angles = ± 0.5°	Date 5-31-2012	SignalTronix	Part No. 4010-100	Rev. A
Finish		Projection	Approval E.E.		File Name File: 4010100A	Part Name Rotary Actuator Outline & Mounting

Notes

LTR	Description	ECN No.	Date	Initial
A	Initial Release		5-31-2012	E.E.



CONNECTOR PIN DESIGNATIONS

- J1-1 PUL + (Step Pulse +5VDC)
- J1-2 PUL - (Step Pulse, open collector input)
- J1-3 DIR + (Step Direction +5VDC)
- J1-4 DIR - (Step Direction, open collector input)
- J1-5 ENA + (Step Enable +5VDC)
- J1-6 ENA - (Step Enable, open collector input)

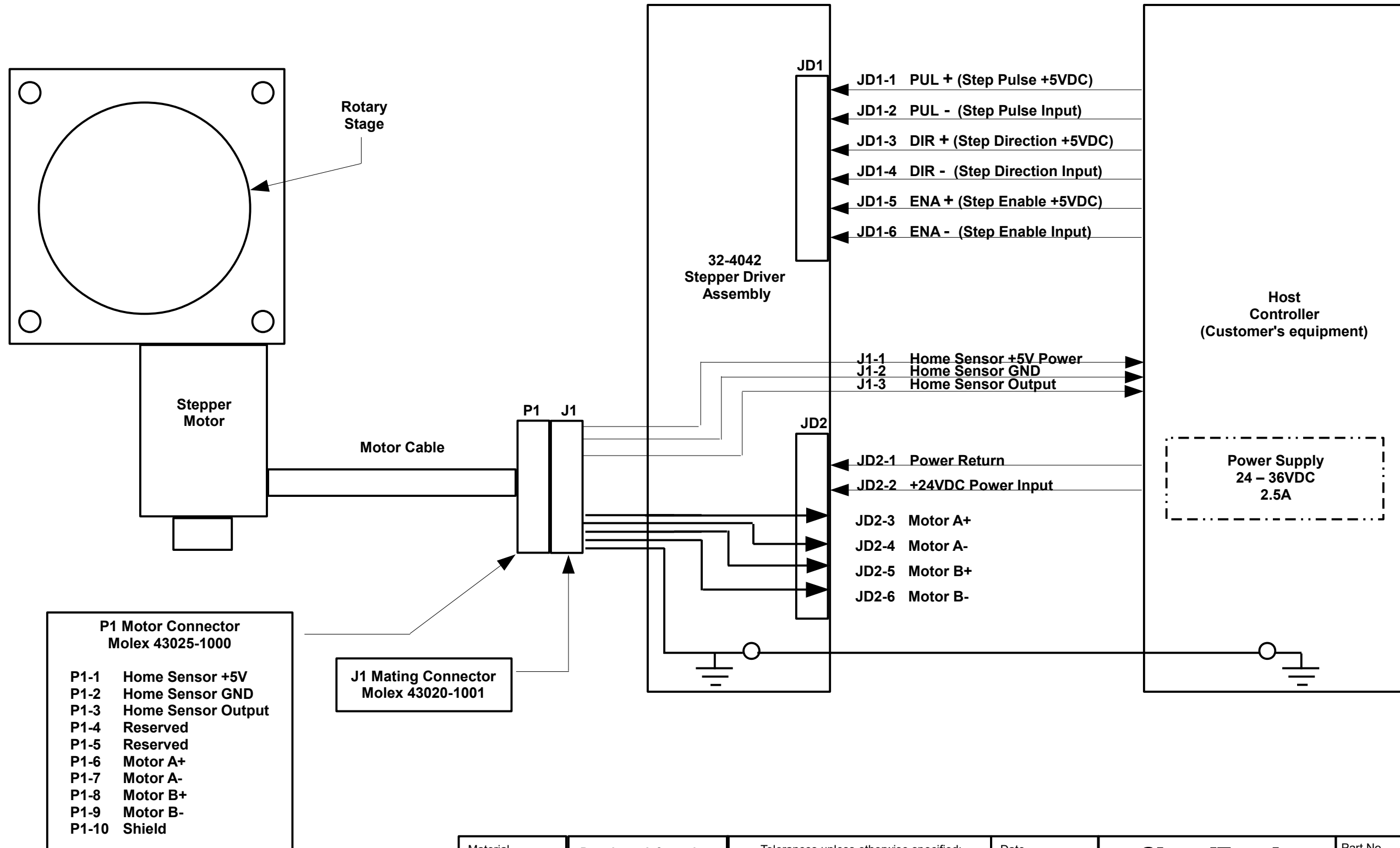
- J2-1 POWER GND (Return)
- J2-2 +20 to +36VDC Power input
- J2-3 MOTOR WINDING A+
- J2-4 MOTOR WINDING A-
- J2-5 MOTOR WINDING B+
- J2-6 MOTOR WINDING B-

Material	Proprietary Information Do not share with a third party without written approval from SignalTronix	Tolerances unless otherwise specified: X.XXX = ±0.005" X.XX = ±0.01" Angles = ± 0.5°	Date 5-31-2012		Part No. 4010-100	Rev. A
Finish		Projection	Approval E.E.		File Name File: 4010100A	Part Name Rotary Actuator Outline & Mounting

Notes

1. Typical connection configuration

LTR	Description	ECN No.	Date	Initial
A	Initial Release		5-31-2012	E.E.



P1 Motor Connector
Molex 43025-1000

P1-1	Home Sensor +5V
P1-2	Home Sensor GND
P1-3	Home Sensor Output
P1-4	Reserved
P1-5	Reserved
P1-6	Motor A+
P1-7	Motor A-
P1-8	Motor B+
P1-9	Motor B-
P1-10	Shield

J1 Mating Connector
Molex 43020-1001

Material	Proprietary Information Do not share with a third party without written approval from SignalTronix	Tolerances unless otherwise specified: X.XXX = ±0.005" X.XX= ±0.01" Angles = ± 0.5°	Date 5-31-2012		Part No. 4010-100	Rev. A
Finish		Projection	Approval E.E.		File Name File: 4010100A	Part Name Rotary Actuator Outline & Mounting